

**SEE YOURSELF AT**

# BALLET

*RI*

KATHLEEN BREEN COMBES, DIRECTOR

**PROFESSIONAL TRAINEE DIVISION**

# OUR HISTORY

Ballet RI is Rhode Island's premier professional ballet company, captivating audiences with a diverse repertoire of classical, neo-classical, and contemporary dance in various venues across Southeastern New England.

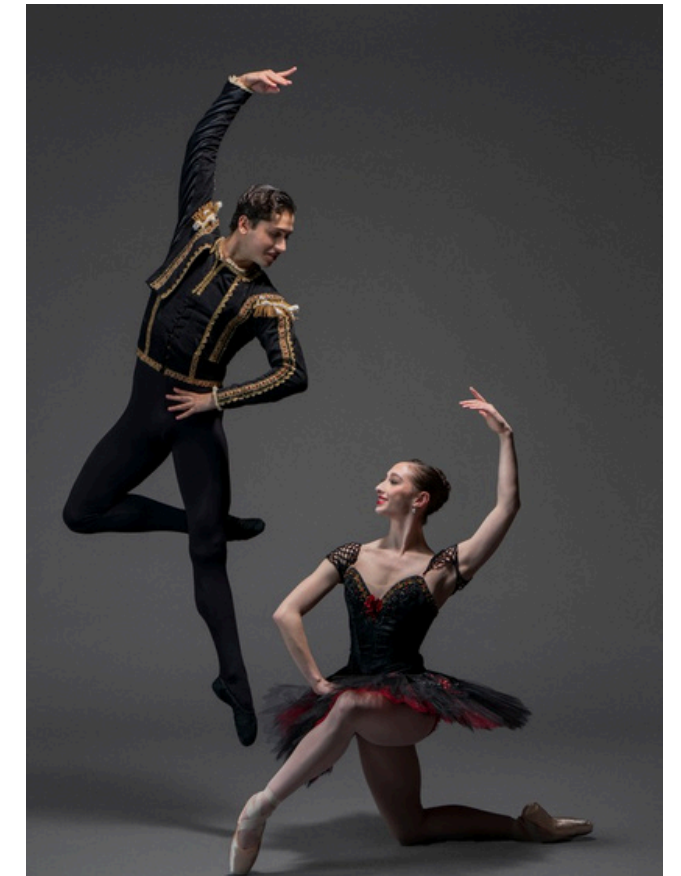
Formerly known as Festival Ballet Providence, Ballet RI was founded in 1978 by Christine Hennessy and Winthrop Corey, both former principal dancers with Canada's Royal Winnipeg Ballet. In 1988, Mihailo Djuric was appointed Artistic Director. During his 22-year tenure, Mr. Djuric expanded the company's repertoire, developing a strong resident company with a growing national and international reputation.

In 2019, Kathleen Breen Combes, former principal dancer with Boston Ballet, was hired. Her unique combination of artistic experience and strategic leadership brought new energy to the organization. As Artistic Executive Director, Breen Combes led the company through the pandemic to return to the stage stronger than ever, significantly expanding its reach and impact.

In May 2023, the organization took a major step forward by rebranding as Ballet Rhode Island. This change signaled a renewed mission: to reimagine classical ballet as a modern, inclusive art form that reflects the rich diversity of Rhode Island's communities.

Ballet RI continues to operate from its Providence, RI home at 825 Hope Street. As it moves boldly into the future, Ballet RI remains rooted in a legacy that began in 1978, while building a company that reflects the possibilities of ballet today.

ROOTED IN RHODE  
ISLAND...



...RISING FOR THE  
REGION

BALLET **RI**  
KATHLEEN BREEN COMBES, DIRECTOR

# BE A PART OF OUR FUTURE

Ballet RI's  
Professional Trainee  
Division



# TRAIN FOR...



THE STUDIO



THE STAGE



THE FIELD

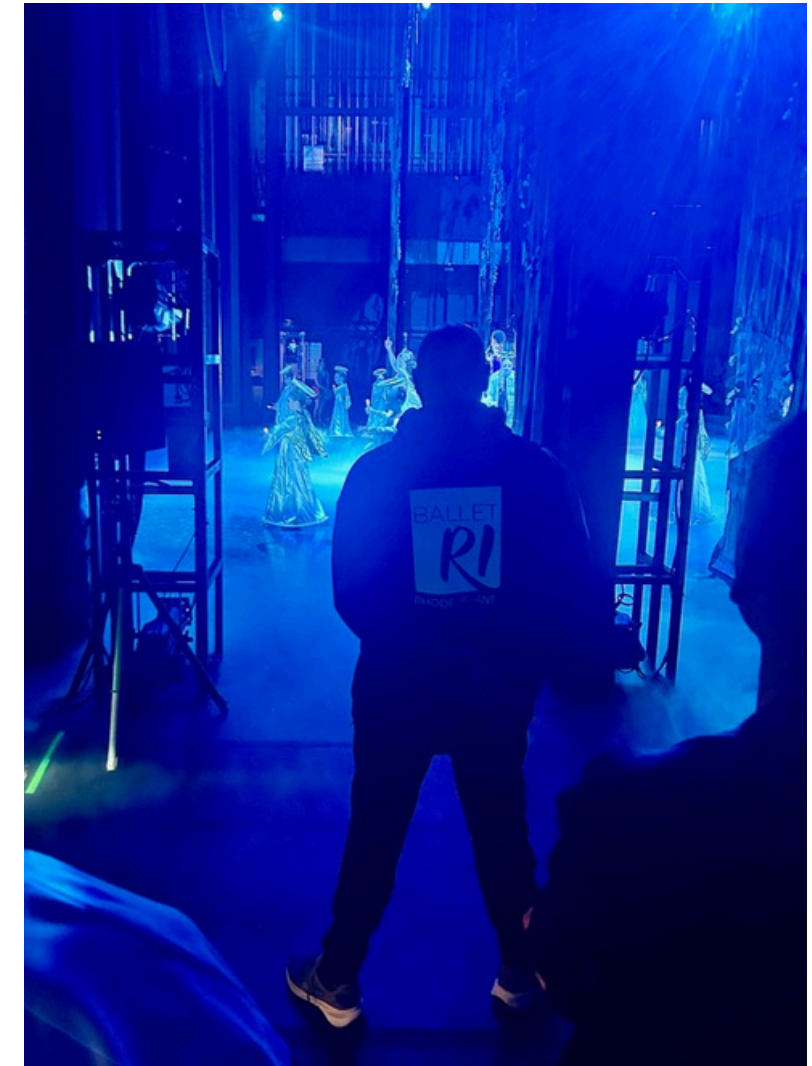
Ballet RI's trainee program offers an encouraging, supportive environment - developing young artists into the professional dancers of tomorrow. The program bridges the gap between student and professional, including opportunities to explore arts management roles within the organization, supporting future career paths and experience beyond dancing.



# WE ARE...

EXCELLENT AND  
CUSTOMIZED ALL IN ONE

- Wide-ranging repertory, including groundbreaking contemporary movement and classical masterworks
- Unmatched artistry in our region
- World-class opportunities in an environment that is one-on-one



BALLET *RI*  
KATHLEEN BREEN COMBES, DIRECTOR

# OUR TEAM



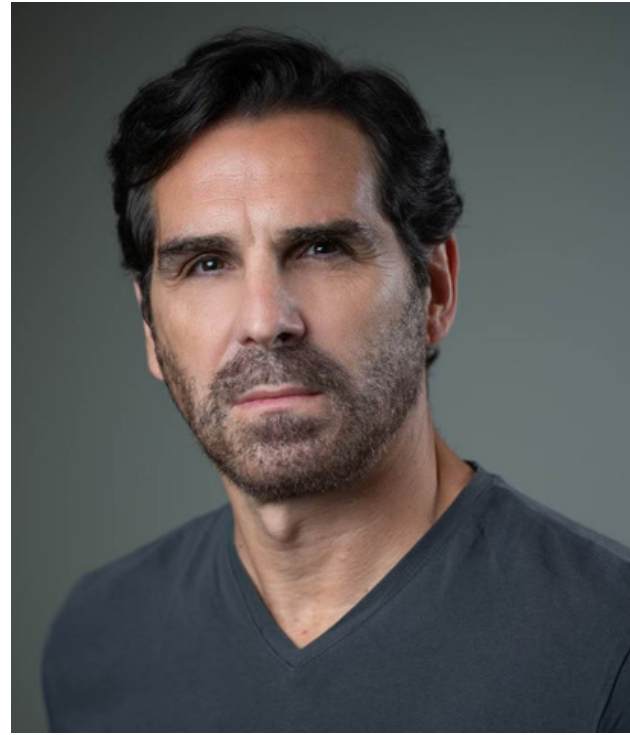
KATHLEEN BREEN COMBES  
Artistic Executive Director

Hailed by The New York Times as a “ballerina of colossal scale and boldness,” Kathleen Breen Combes enjoyed an illustrious career as Principal Dancer with Boston Ballet before taking the helm of Ballet RI.

She has performed on the world’s most prestigious stages, and originated roles with choreographers such as William Forsythe and Jorma Elo. A Benois de la Danse nominee and Dance Magazine cover artist, her repertoire spans the classical and neoclassical canon and groundbreaking contemporary works.

With degrees in Communications, Management, and Nonprofit Leadership, Breen Combes now blends artistic mastery with visionary leadership, building an innovative, inclusive, and world-class ballet company for Rhode Island and beyond.

# OUR TEAM



YURY YANOWSKY  
Artistic Curator &  
Resident Choreographer

Internationally renowned dancer and award-winning choreographer Yury Yanowsky spent over 20 years as a Principal Dancer with Boston Ballet, earning acclaim for his bravura technique, stage presence, and versatility across classical and contemporary works. Winner of the Prix de Lausanne and silver medals at the Varna and U.S. International Ballet Competitions, he has performed as a guest artist with The Royal Ballet, National Ballet of Prague, National Ballet of China, and Pennsylvania Ballet.

As a choreographer, Yanowsky has created acclaimed works for companies worldwide, including Boston Ballet, Atlanta Ballet, Tulsa Ballet, Richmond Ballet, Kansas City Ballet, and Bundes Jugend Ballet. He is the recipient of the Choreographic Prize at the prestigious Erik Bruhn Competition and his *Smoke and Mirrors* was named “Best in Dance” by The Arts Fuse. In 2021 his full-length *Nutcracker* for Ballet RI was hailed by The Boston Globe as “awe-inspiring.” Currently Artistic Curator and Resident Choreographer at Ballet RI, Yanowsky is known for bold, collaborative works that resonate with today’s audiences.



CHRIS ANDERSON  
Artistic Coach and Principal,  
School of Ballet RI



LETICIA GUERRERO  
Artistic Coach and Faculty,  
School of Ballet RI



ANAÏS CHALENDARD  
Guest Artistic Coach

# OUR TEAM

Ballet RI's dedicated artistic team leads the professional Trainees through a program designed intentionally to meet the needs of each participant. The team's years of combined expertise at the highest level of the ballet field ensures tailor-made support for each Trainee throughout their respective journey at Ballet RI.

Trainees work alongside Ballet RI's resident company when repertoire opportunities arise, receiving premier artistic coaching. Audition preparation classes and one-on-one mentorships are also provided for the trainees, launching them into the professional world with confidence and skillsets appropriate for the demands of today's careers in ballet.



# STEP ONE: AUDITION

BALLET *RI*  
KATHLEEN BREEN COMBES, DIRECTOR



**A TASTE OF THE  
TRAINEE  
PROGRAM**

COMPANY REPERTORY  
WORKSHOP

# A TASTE OF THE TRAINEE PROGRAM

## COMPANY REPERTORY WORKSHOP

JUNE 29-JULY 3, 2026 AND/OR  
JULY 6-JULY 10, 2026

Company Rep Workshop (CRW) is an immersive experience for emerging professional dancers ready to step inside the artistic world of Ballet Rhode Island. This intensive workshop offers direct access to Ballet RI's repertoire, rehearsal process, and company culture.

Led by Ballet RI's Artistic Staff and Faculty, participants will work closely with Artistic Curator and Resident Choreographer Yury Yanowsky, diving into choreography and classical repertoire through hands-on coaching and rehearsal. CRW is a unique opportunity to sharpen artistry, deepen technical understanding, and experience the standards and expectations of a professional ballet company.

Registration fee: \$50/ €45

Tuition for one week: \$800/ €680

Tuition for two weeks: \$1500/ €1270

Housing: \$750 per week/ €635

BALLET *RI*  
KATHLEEN BREEN COMBES, DIRECTOR

# STEP TWO: THE PROGRAM



PROFESSIONAL TRAINEE DIVISION

BALLET *RI*  
KATHLEEN BREEN COMBES, DIRECTOR



# SCHEDULE

BUILD YOUR ARTISTRY

September through May | Monday - Saturday

- 9:00am-10:30am | Daily trainee technique class
- 10:30am-12:00pm | Pointe, variations, conditioning, contemporary (variable)
- 12:00pm-1:00pm | Lunch
- 1:00pm - 4:30pm | Rehearsal or Professional Development:
  - Topics include -
    - mental strength training
    - wellness workshops
    - taxes, reading and understanding contracts, life skills, and more.

All classes are required unless trainees are requested in company rehearsals.

# ROLES & RESPONSIBILITIES

## UNDERSTAND THE FIELD

Trainees have the chance to explore opportunities within the administrative and educational aspects of Ballet RI to bolster their career readiness by:

- Connecting with staff to determine areas of interest and skill alignment
- Learning about the functionality of an arts organization to open doors to work in dance beyond an artist's performance career.
- Assisting the Box Office Manager and production staff during the performance season

Trainees on full scholarship will fulfill volunteer hours through social media, administrative, event, health and development, and performance support. There are select opportunities for paid hourly positions in community engagement programs.

# PERFORMANCE OPPORTUNITIES

BE SEEN ON STAGE

Multiple performance opportunities will be available to the Trainees throughout the course of the year as determined by the Artistic Staff. Trainees performing with the company will be seen by over 22,000 audience members annually, as well as being featured in Ballet RI's various marketing materials.

Additional performance opportunities will be available to the Trainees through our community engagement programs and School of Ballet RI Culmination which will serve as the completion of the Trainee program for the Academic Year.

BALLET **RI**  
KATHLEEN BREEN COMBES, DIRECTOR



# PERFORMANCE OPPORTUNITIES

BE SEEN ONSTAGE

Season 48 (Sept 2025-May 2026) includes:

- 52 performances
- 7 theaters
- Choreography from:
  - George Balanchine
  - John Lam
  - Emily Mistretta
  - Christopher Wheeldon
  - Yury Yanowsky
  - and more!
- with one-on-one artistic coaching!

BALLET *RI*  
KATHLEEN BREEN COMBES, DIRECTOR

# TUITION

## TUITION INCLUDES:

- Registration fee: €500 to GCDANCEEVENTS
- Tuition: \$850 / €700 per month
  - Available options: 1 month, 3 months, 6 months, and 1 year

Merit based scholarships are awarded at the discretion of the Artistic Executive Director. Payment plans can be entered into after a conversation with the School of Ballet RI Registrar.

Housing is not available via Ballet RI, but company staff can connect Trainees with local resources to assist in the procurement of housing.



# VISA + IMMIGRATION

## PLEASE NOTE

Ballet RI cannot provide support as relates to Visas and Immigration.

- a 3-month stay as a tourist is possible for most nationalities without applying for a visa
- if you wish to study for 6 months, please consider remaining outside the country for a 3-month before reapplying for a tourist stay



BALLET RI  
KATHLEEN BREEN COMBES, DIRECTOR

# LIVING IN PROVIDENCE

BUILDING YOUR COMMUNITY



BALLET *RI*  
KATHLEEN BREEN COMBES, DIRECTOR

# PROVIDENCE, RI

## THE CULTURAL CAPITAL



“ the accessibility and friendliness of a small town with the culture and sophistication of a big city.”

- More nightlife establishments per person than New York City
- A higher share of students than Philadelphia
- A population as international as Los Angeles
- Home to 20% of Rhode Island’s restaurants
- Home to 26% of Rhode Island’s performance venues
- Less than 20 minutes away from the beautiful RI beaches

Make Providence your home!

\*Data from the The City of Providence’s Department of Art Culture and Tourism

BALLET **RI**  
KATHLEEN BREEN COMBES, DIRECTOR



# BUILD YOUR NETWORK

## FRIENDS AND COLLEAGUES

Ballet RI's Professional Trainee Program introduces you to new friends and colleagues from around the globe. Our faculty and staff have close connections to the following institutions:

- Boston Ballet
- San Francisco Ballet
- New York City Ballet
- American Ballet Theatre
- Houston Ballet
- Dance/USA
- Mark Morris Dance Group
- Baryshnikov Arts
- José Limon Dance Company
- Eglevsky Ballet
- Ballet X

and many, many more!  
Your time in the Professional  
Trainee Division  
connects you to the whole field.

**BALLET** *RI*  
KATHLEEN BREEN COMBES, DIRECTOR

**SEE YOURSELF AT...**



**BALLET** *RI*

KATHLEEN BREEN COMBES, DIRECTOR

**PROFESSIONAL TRAINEE DIVISION**