

## ***COSTUME AND HAIR REQUIREMENTS***

### ***MAKE-UP***

Pre-ballet I, II, III, Ballet/Tap, Open Ballet, Open Modern, Open MT Jazz, Level I, II and III. No make-up required. Mascara, blush and lipstick are optional.

Levels 4 and 5. Light make-up is required. Soft tone eye shadows, blush, mascara and lipstick.

Levels 6, 7 and 8 proper stage make-up is required.

### ***UNDERS***

It is recommended that all female students wear a flesh-toned leotard under their costume for ease of changing.

Pre-ballet I, II, III and Level 1, 2, and 3 boys should wear white solid underwear.

Boys in Level 4 and up should wear a flesh toned dance belt.

### ***COSTUME AND HAIR (see images for bun placement guidance)***

#### **Pre-Ballet I**

Female: Hair in high bun, white socks and pink shoes

Male: white socks and white ballet shoes.

#### **Pre-Ballet I**

Female: Hair in high bun, white socks and pink shoes

Male: white socks and white ballet shoes, neat hairstyle.

#### **Pre-Ballet II**

Female: Hair in high bun, white socks and pink shoes

Male: white socks and white ballet shoes, neat hairstyle.

#### **Pre-Ballet III**

Female: Double buns with either pink tights or flesh toned tights and ballet shoes that align.

Male: white socks and white ballet shoes, neat hairstyle.

#### **Level 1**

Female: Mid-bun, either pink or flesh toned ballet shoes, NO tights.

Male: white ballet shoes, neat hairstyle

#### **Level 2 Ballet**

Female: Mid-bun, either pink tights or flesh toned tights and ballet shoes that align

#### **Level 2 Jazz**

Female: Mid-ballet bun, black jazz shoes, pink or flesh toned tights and black jazz shoes

#### **Level 3 Ballet**

Female: Mid-Bun, either pink tights or flesh toned tights and ballet shoes that align

#### **Level 3 Jazz**

Female: Mid-bun, either pink tights or flesh toned tights, and black jazz shoes

#### **Open Integrated Modern-**

Female: Hair half pulled back with either pink or flesh toned ballet shoes

#### **Open MT Jazz**

Female: Hair pulled back in ponytail, puff or braids, black jazz shoes

#### **Ballet/Tap**

Female: Hair pulled back in ponytail, puff or braids, flesh-toned tights and tap shoes

#### **ProviDANCE**

Female: Mid-bun, either pink tights or flesh toned tights and ballet shoes that align

Male: black shorts, white socks and white ballet shoes, neat hairstyle.

#### **Level 4 Contemporary**

Female: hair in mid-bun, no tights, pink or flesh toned ballet shoes.

#### **Level 4 Ballet**

Female: hair in mid-bun, either pink tights or flesh toned tights and ballet shoes that align.

**Level 4 Character**

Female: hair in mid-bun, either pink tights or flesh toned tights and ballet shoes that align.

**Level 5 Contemporary**

Female: hair in mid-bun, no tights, ballet shoes.

**Level 5 Ballet**

Female: hair in mid-bun, either pink tights and ballet shoes or flesh toned tights and ballet shoes.

**Level 5 Character**

Female: hair in mid-bun,

**Level 6- Contemporary**

Female: Hair pulled back in ponytail, puff or braids, pink or flesh toned ballet shoes

Male: neat hairstyle, white or flesh toned ballet shoes

**Level 6 Ballet**

Female: hair in mid-bun, either pink tights or flesh toned tights and Pointe shoes that align.

Male: neat hairstyle, white tights and white ballet shoes

**Level 6/7/8 Indian**

Female: Hair down/out, bare feet

Male: neat hairstyle, bare feet

**Level 7/8 Contemporary**

Female: Hair half pulled back, flesh toned socks

**Level 7/8 Jazz**

Female: Hair in ponytail, puff or braids, white Keds provided

**Level 7/8 Ballet**

Female: Hair in mid-bun, either pink tights or flesh toned tights and Pointe shoes that align.

**Ensemble- Perfect Predator**

Female: Hair in bun, flesh-toned socks

Male: neat hairstyle, flesh-toned socks

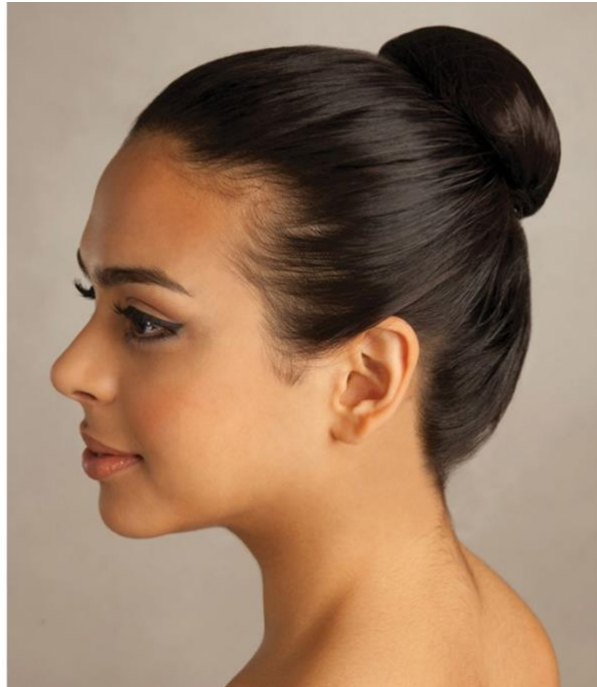
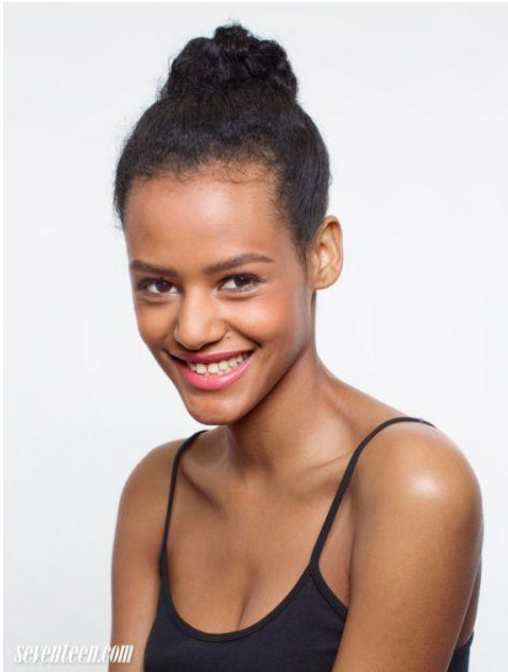
Low Bun example



Mid-Bun example



High Bun examples



Double Buns or Puffs examples

